

Engineering Specification

Job Name _____

Contractor _____

Job Location _____

Approval _____

Engineer _____

Contractor's P.O. No. _____

Approval _____

Representative _____

LINEA

Channels, Grates & Accessories

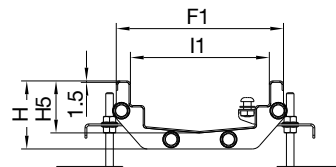
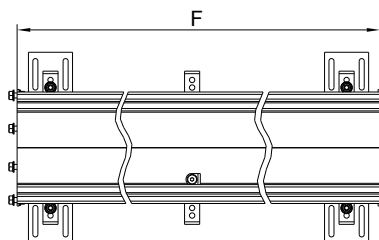
Specification

BLÜCHER LINEA is a streamlined and sleek drainage solution manufactured from 316 stainless steel which enables it to be used for both internal and external applications. Designed to fit into various architectural settings, offering both a contemporary look and durable performance. The modular system uses a variety of straight sections, 0.5m, 1m and 3m combined with "T" sections and 90° corners.

Call customer service if you need assistance with technical details.

Channel Type 670.xxx Neutral

Qty.	Order Code	F		F1		I1		H		H5.		Weight	
		in.	mm	in.	mm	in.	mm	in.	mm	in.	mm	lbs.	kg
	670.050.015.55 S	19 11/16	500	7	177	5 13/16	147	2 13/16	72	2 3/16	55	5.1	2.3
	670.050.015.85 S	19 11/16	500	7	177	5 13/16	147	4 1/8	104	3 3/8	85	6.1	2.76
	670.100.015.55 S	39 3/8	1000	7	177	5 13/16	147	2 13/16	72	2 3/16	55	9.8	4.45
	670.100.015.85 S	39 3/8	1000	7	177	5 13/16	147	4 1/8	104	3 3/8	85	11.6	5.27
	670.300.015.55 S	118 1/8	3000	7	177	5 13/16	147	2 13/16	72	2 3/16	55	25.9	11.73
	670.300.015.85 S	118 1/8	3000	7	177	5 13/16	147	4 1/8	104	3 3/8	85	30.8	13.96



All dimensions in mm and inches. Includes legs, nuts, bolts, and gaskets as shown.

If Stainless Steel grade AISI 304 / EN 1.4301 is required specify type no. without suffix S.

NOTICE

The information contained herein is not intended to replace the full product installation and safety information available or the experience of a trained product installer. You are required to thoroughly read all installation instructions and product safety information before beginning the installation of this product.

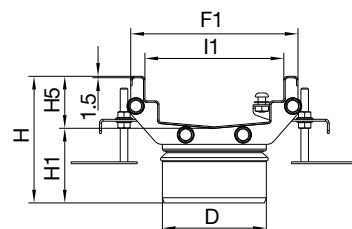
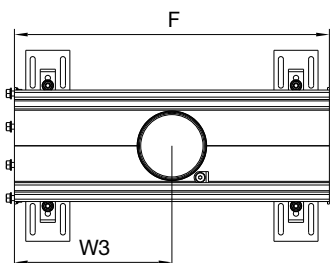
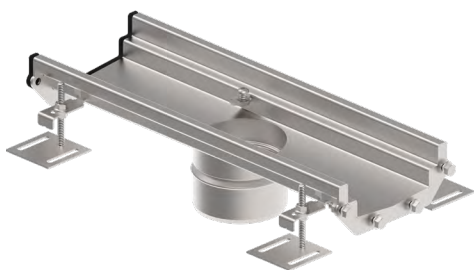
Watts product specifications in U.S. customary units and metric are approximate and are provided for reference only. For precise measurements, please contact Watts Technical Service. Watts reserves the right to change or modify product design, construction, specifications, or materials without prior notice and without incurring any obligation to make such changes and modifications on Watts products previously or subsequently sold.

BLÜCHER®

A WATTS Brand

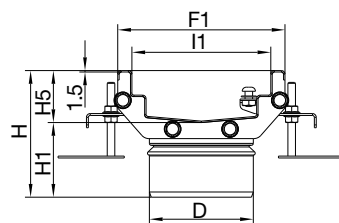
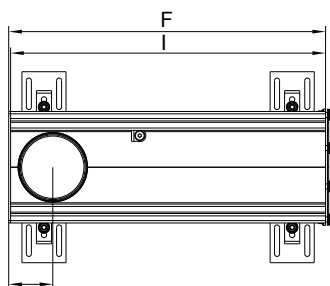
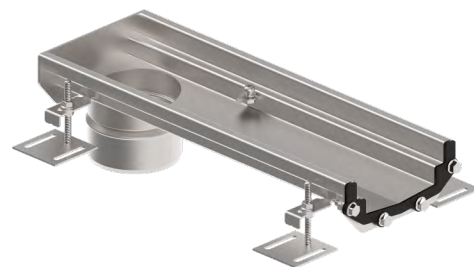
Channel Type 670.910 with Center Outlet

Qty.	Order Code	D		F		F1		I1		H		H1		H5		W3		Weight	
		in.	mm	in.	mm	in.	mm	in.	mm	in.	mm	in.	mm	in.	mm	in.	mm	lbs.	kg
	670.910.015.55 S	4 3/8	110	19 11/16	500	7	177	5 13/16	147	5 1/4	134	3 1/8	79	2 3/16	55	9 7/8	250	5.6	2.54
	670.910.015.85 S	4 3/8	110	19 11/16	500	7	177	5 13/16	147	6 1/2	164	3 1/8	79	3 3/8	85	9 7/8	250	7.6	3.45



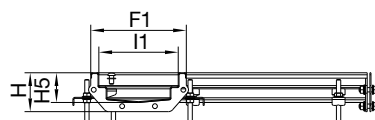
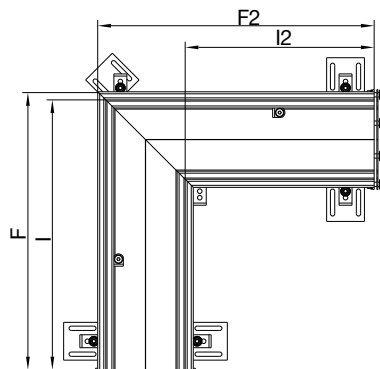
Channel Type 670.900 with End Outlet

Qty.	Order Code	D		F		F1		I		I1		H		H1		H5		W3		Weight	
		in.	mm	in.	mm	in.	mm	in.	mm	in.	mm	in.	mm	in.	mm	in.	mm	in.	mm	lbs.	kg
	670.900.015.55 S	4 3/8	110	19 3/4	503	7	177	19 11/16	500	5 13/16	147	5 1/4	134	3 1/8	79	2 3/16	55	2 13/16	70	5.8	2.63
	670.900.015.85 S	4 3/8	110	19 3/4	503	7	177	19 11/16	500	5 13/16	147	6 1/2	164	3 1/8	79	3 3/8	85	2 13/16	70	8	3.61



Channel Type 670.090.015 Corner

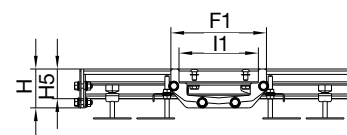
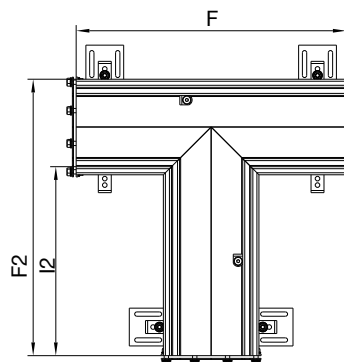
Qty.	Order Code	F		F1		F2		I		I1		I2		H		H5		Weight	
		in.	mm	in.	mm	in.	mm	in.	mm	in.	mm	in.	mm	in.	mm	in.	mm	lbs.	kg
	670.090.015.55 S	20 5/16	515	7	177	20 3/16	512	19 11/16	500	5 13/16	147	13 13/16	350	2 13/16	72	2 3/16	55	9.4	4.26
	670.090.015.85 S	20 5/16	515	7	177	20 3/16	512	19 11/16	500	5 13/16	147	13 13/16	350	4 1/8	104	3 3/8	85	11	4.97



All dimensions in mm and inches. Includes legs, nuts, bolts, and gaskets as shown.
If Stainless Steel grade AISI 304 / EN 1.4301 is required specify type no. without suffix S.

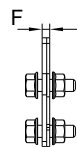
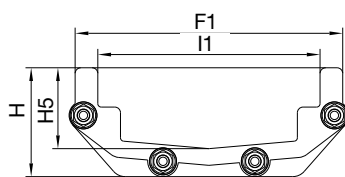
Channel Type 670.180 T-Section

Qty.	Order Code	F		F1		F2		I1		I2		H		H5		Weight	
		in.	mm	in.	mm	in.	mm	in.	mm	in.	mm	in.	mm	in.	mm	lbs.	kg
	670.180.015.55 S	19 11/16	500	7	177	20 3/16	512	5 13/16	147	13 13/16	350	2 13/16	72	2 3/16	55	8.4	3.82
	670.180.015.85 S	19 11/16	500	7	177	20 3/16	512	5 13/16	147	13 13/16	350	4 1/8	104	3 3/8	85	11.1	5.01



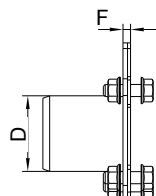
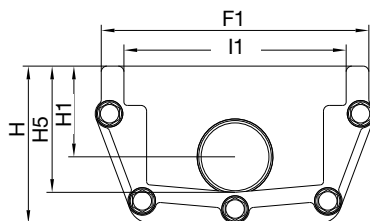
Channel Type 670.000 End Plate

Qty.	Order Code	F		F1		I1		H		H5		Weight	
		in.	mm	in.	mm	in.	mm	in.	mm	in.	mm	lbs.	kg
	670.000.015.55 S	3/16	5	7	177	5 13/16	147	2 13/16	72	2 3/16	55	0.9	0.4
	670.000.015.85 S	3/16	5	7	177	5 13/16	147	4 1/8	104	3 3/8	85	1.2	0.55



Channel Type 670.001 End Plate with Outlet

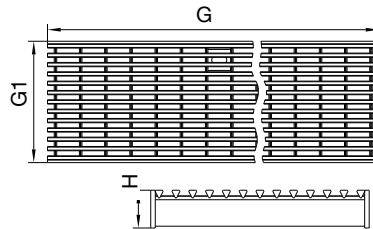
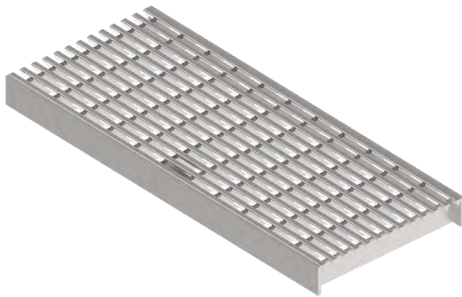
Qty.	Order Code	D		F		F1		I1		H		H1		H5		Weight	
		in.	mm	in.	mm	in.	mm	in.	mm	in.	mm	in.	mm	in.	mm	lbs.	kg
	670.001.015.85 S	2	50	3/16	5	7	177	5 13/16	147	4 1/8	104	2 3/8	60	3 3/8	85	1.3	0.57



All dimensions in mm and inches. Includes legs, nuts, bolts, and gaskets as shown.
If Stainless Steel grade AISI 304 / EN 1.4301 is required specify type no. without suffix S.

Channel Type 697.671.150 BLÜCHER LINEA Grating

Qty.	Order Code	H		G		G1		EN1253		EN1433		Weight	
		in.	mm	in.	mm	in.	mm	lbs.	kg	lbs.	kg	lbs.	kg
	697.671.150.34 S	1	25	13 11/16	349	5 11/16	144	7.3	R50 (3.33)	18.4	B125 (8.33)	3.9	1.78
	697.671.150.49 S	1	25	19 11/16	499	5 11/16	144	7.3	R50 (3.33)	18.4	B125 (8.33)	5.6	2.53
	697.671.150.99 S	1	25	39 5/16	998	5 11/16	144	7.3	R50 (3.33)	18.4	B125 (8.33)	11.1	5.05

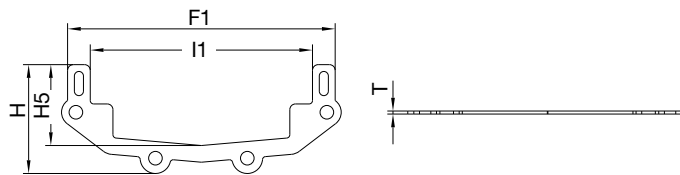
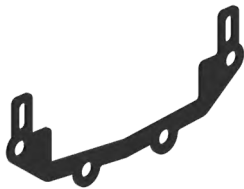


Ordering Guide for Gratings	
Product Item	Gratings
Corner & T-Section	1 no. 499 mm / 19 11/16" + 1 no. 349 mm / 13 11/16"
500 mm Long Items	1 no. 499 mm / 19 11/16"
1000 mm Channel Length	1 no. 998 mm / 39 5/16"
3000 mm Channel Length	3 no. 998 mm / 39 5/16"

Accessories

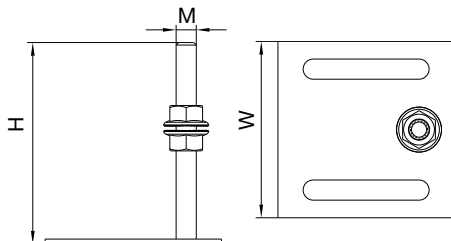
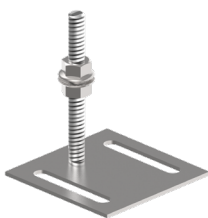
Type 670.EPDM Gasket

Qty.	Order Code	F1		I1		H		H5		T		Weight	
		in.	mm	in.	mm	in.	mm	in.	mm	in.	mm	lbs.	kg
	670.EPDM.015.55	7	177	5 13/16	147	2 13/16	72	2 1/8	54	1/16	2	0.02	0.01
	670.EPDM.015.85	7	177	5 13/16	147	4 1/8	104	3 5/16	84	1/16	2	0.02	0.01



Type 670.080 Adjustable Leg

Qty.	Order Code	H		M		W		Weight	
		in.	mm	in.	mm	in.	mm	lbs.	kg
	670.080.001	3 3/16	80	5/16	8	2 13/16 x 2 13/16	70 x 70	0.2	0.1

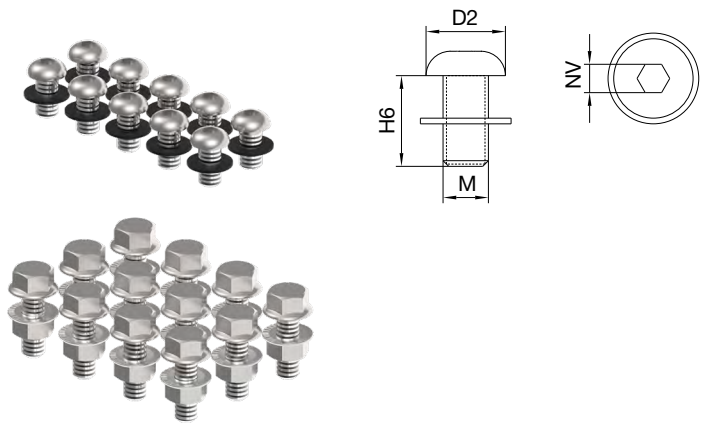


All dimensions in mm and inches. Includes legs, nuts, bolts, and gaskets as shown.

If Stainless Steel grade AISI 304 / EN 1.4301 is required specify type no. without suffix S.

Type 670.M8 Screws

Qty.	Order Code	D2		H6		M		NV		Weight	
		in.	mm	in.	mm	in.	mm	in.	mm	lbs.	kg
	670.M8.016 S	1/2	14	5/8	16	5/16	8	3/16	5	0.02	0.01
	670.M8.025	11/16	18	1	25	5/16	8	1/2	14	0.07	0.03



All dimensions in mm and inches. Includes legs, nuts, bolts, and gaskets as shown.
If Stainless Steel grade AISI 304 / EN 1.4301 is required specify type no. without suffix S.



A WATTS Brand

