

# Engineering Specification

Job Name \_\_\_\_\_  
 Job Location \_\_\_\_\_  
 Engineer \_\_\_\_\_  
 Approval \_\_\_\_\_

Contractor \_\_\_\_\_  
 Approval \_\_\_\_\_  
 Contractor's P.O. No. \_\_\_\_\_  
 Representative \_\_\_\_\_

## Pipe Bends

### Specification

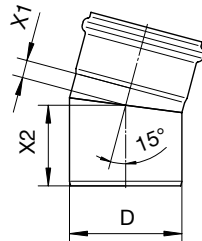
BLÜCHER Pipe AISI Type 316L (standard) stainless steel pipe system, with Push-Fit socket connections with EPDM (standard) sealing ring. All BLÜCHER Pipe to be treated with pickling and passivation finish process.

Call customer service if you need assistance with technical details.

### 15° Bend



Global Ref. # 820.015.XXXS

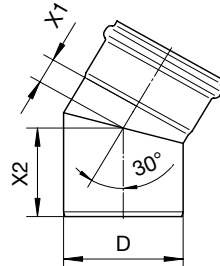


Model No.	D	X1	X2
B1.5-15-316	1-1/2"(40)	5/8"(15)	2-1/16"(53)
B2-15-316	2"(50)	5/16"(7)	2-3/16"(54)
B3-15-316	3"(75)	7/16"(11)	2-5/8"(66)
B4-15-316	4"(110)	11/16"(18)	3-1/8"(78)
B5-15-316	5"(125)	9/16"(14)	3-5/16"(84)
B6-15-316	6"(160)	15/16"(23)	3-15/16"(99)
B8-15-316	8"(200)	15/16"(23)	4-7/8"(123)
B10-15-316	10"(250)	1-3/16"(30)	5-3/8"(136)

### 30° Bend



Global Ref. # 820.030.XXXS



Model No.	D	X1	X2
B1.5-30-316	1-1/2"(40)	11/16"(18)	2-3/16"(55)
B2-30-316	2"(50)	7/16"(11)	2-1/4"(57)
B3-30-316	3"(75)	11/16"(18)	2-13/16"(71)
B4-30-316	4"(110)	15/16"(23)	3-3/8"(85)
B5-30-316	5"(125)	15/16"(23)	3-7/8"(98)
B6-30-316	6"(160)	1-3/8"(34)	4-3/8"(110)
B8-30-316	8"(200)	1-1/2"(40)	5-7/16"(137)
B10-30-316	10"(250)	1-15/16"(48)	6-1/16"(153)

### NOTICE

The information contained herein is not intended to replace the full product installation and safety information available or the experience of a trained product installer. You are required to thoroughly read all installation instructions and product safety information before beginning the installation of this product.

### Approvals



Compliance with NSF/ANSI/3-A 14159-1-Hygiene Requirements for the Design of Meat and Poultry Processing Equipment



\* Product is certified to the uniform plumbing code ASME A112.6.3

BLÜCHER product specifications in U.S. customary units and metric are approximate and are provided for reference only. For precise measurements, please contact BLÜCHER Technical Service. BLÜCHER reserves the right to change or modify product design, construction, specifications, or materials without prior notice and without incurring any obligation to make such changes and modifications on BLÜCHER products previously or subsequently sold.

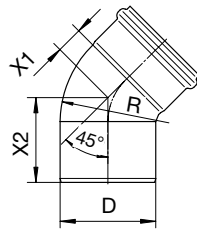


A WATTS Brand

## 45° Bend



Global Ref. # 820.045.XXX S

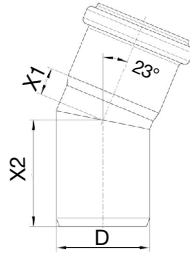


Model No.	D	X1	X2	R
B1.5-45-316	1-1/2"(40)	13/16"(21)	2-1/4"(58)	1-1/2"(40)
B2-45-316	2"(50)	7/8"(21)	2-3/8"(60)	2"(50)
B3-45-316	3"(75)	1-1/8"(28)	3"(75)	3"(75)
B4-45-316	4"(110)	1-1/2"(40)	3-11/16"(93)	4"(110)
B5-45-316	5"(125)	2-1/8"(53)	4-3/8"(111)	5"(125)
B6-45-316	6"(160)	1-15/16"(49)	5-3/16"(131)	6"(160)
B8-45-316	8"(200)	5-3/8"(136)	9-3/16"(234)	8"(200)
B10-45-316	10"(250)	6-15/16"(176)	11"(280)	10"(250)

## 23° Bend



Global Ref. # 820.023.XXX S

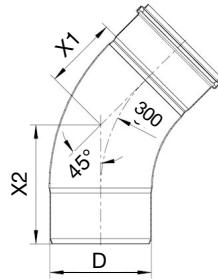


Model No.	D	X1	X2
820.023.050 S	2"(50)	9/16"(14)	2-1/4"(57)
820.023.075 S	3"(75)	13/16"(21)	2-13/16"(71)
820.023.110 S	4"(110)	1-1/8"(28)	3-3/8"(85)
820.023.160 S	6"(160)	1-1/2"(37)	4-5/16"(109)

## 45° Sweep



Global Ref. # 825.045.XXX S

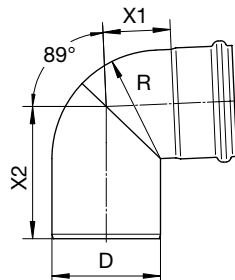


Model No.	D	X1	X2
825.045.200 S	8"(200)	5-11/16"(144)	9-3/16"(234)
825.045.250 S	10"(250)	7-3/8"(187)	11"(280)
825.045.315 S	12"(315)	8"(204)	12-5/8"(320)

## 90° 1/4 Bend



Global Ref. # 820.090.XXXAS

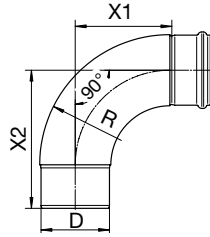


Model No.	D	X1	X2	R
B1.5-90-316	1-1/2"(40)	1-1/4"(32)	3-1/8"(79)	1-1/2"(40)
B2-90-316	2"(50)	1-7/16"(35)	3-7/16"(86)	2"(50)
B3-90-316	3"(75)	1-15/16"(48)	4-1/4"(107)	3"(75)
B4-90-316	4"(110)	2-11/16"(68)	5-5/16"(134)	4"(110)
B5-90-316	5"(125)	3-1/2"(88)	6-5/16"(161)	5"(125)
B6-90-316	6"(160)	3-15/16"(99)	7-1/8"(181)	6"(160)
B8-90-316	8"(200)	11-3/4"(299)	15-5/8"(397)	8"(200)
B10-90-316	10"(250)	15"(350)	19-1/16"(484)	10"(250)

# 90° Sweep 1/4 Bend



Global Ref. # 825.090.XXXS



Model No.	D	X1	X2	R
B2-90S-316	2"(50)	4- <sup>15</sup> / <sub>16</sub> "(125)	3"(77)	3- <sup>13</sup> / <sub>16</sub> "(97)
B3-90S-316	3"(75)	6- <sup>1</sup> / <sub>8</sub> "(155)	4- <sup>1</sup> / <sub>8</sub> "(105)	5- <sup>1</sup> / <sub>4</sub> "(133)
B4-90S-316	4"(110)	8- <sup>3</sup> / <sub>4</sub> "(222)	6- <sup>5</sup> / <sub>16</sub> "(160)	8- <sup>1</sup> / <sub>4</sub> "(209)
B6-90S-316	6"(160)	12- <sup>11</sup> / <sub>16</sub> "(322)	9- <sup>3</sup> / <sub>4</sub> "(247)	12- <sup>5</sup> / <sub>16</sub> "(313)



A WATTS Brand

USA: T: (800) 338-2581 • BLUCHERpipe.com

Canada: T: (888) 208-8927 • BLUCHERpipe.ca

Latin America: T: (52) 55-4122-0138 • BLUCHERpipe.com

